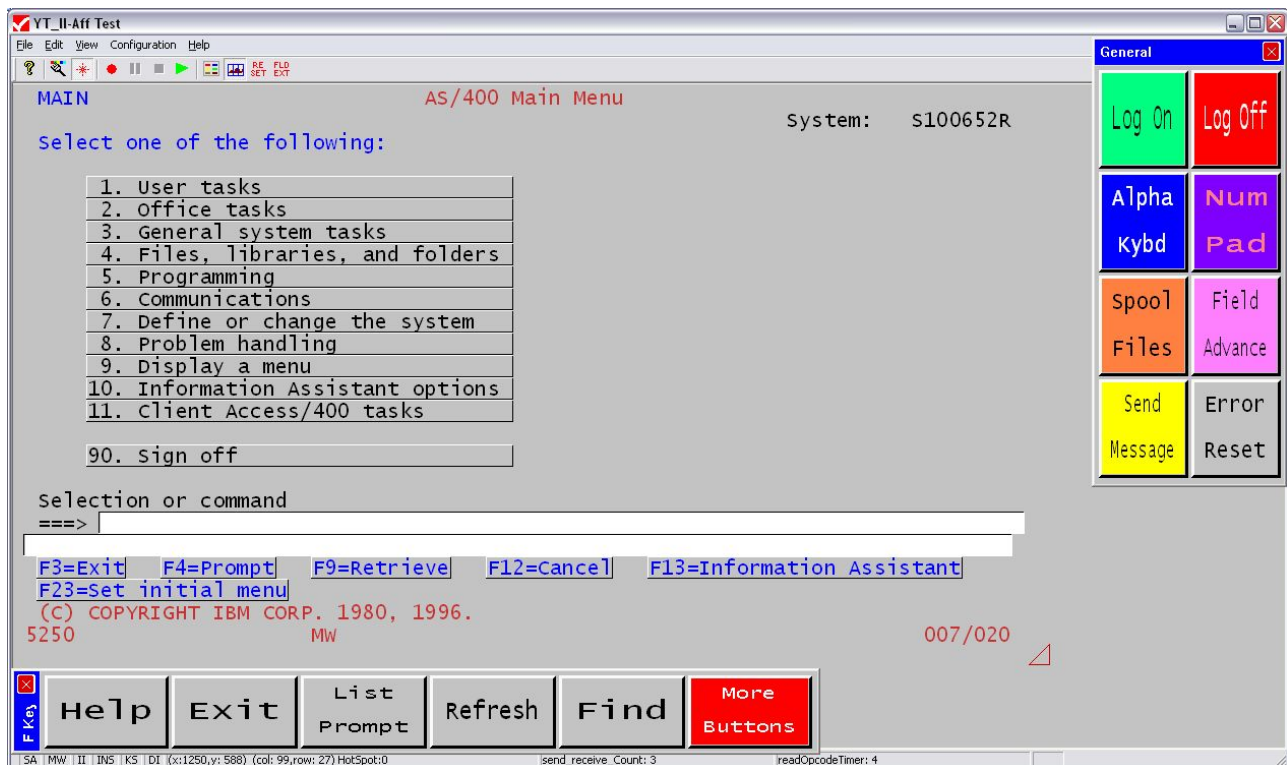




YESterm II 5250 TCP/IP Emulation User Guide

Version 3.1.31



Copyright 2007 Affirmative Computer Products®
April 2007



YESterm II Overview

Features

The YESterm II TN5250e emulator provides users with a powerful capability to connect to an IBM AS/400 or iSeries host computer via the TCP/IP protocol. It provides enhanced emulation functions with unique graphical presentation, including Fat Finger Control button panels. Up to twelve concurrent TCP/IP connections can be configured to multiple hosts.

YESterm II can be installed on:

- Windows XP PCs
- YESstation Windows Based Terminals with Windows CE 5.0 or XPe.
- YEStablets with Windows CE 5.0 or XPe.

Features and operations are identical on the different platforms unless otherwise described in this document.

Significant characteristics of YESterm II display sessions are:

- Scalable display size.
- Multiple custom Fat Finger Control button panels.
- Programmable Alpha and Numeric Keypads.
- Enhanced macro Record/Playback.
- Caged Mouse cursor.
- Choice of Windows or “Green Screen” Text presentation modes.

Licensing

YESterm II is offered at two licensing levels. The lower, default level allows a maximum of five button panels. The advanced level allows a maximum of fifty button panels. Your copy of YESterm II contains the code for both levels, and your registration key determines the active level. You can upgrade your level by paying for and obtaining a new registration key.

General Operation

- A session can be operated in Administrative or User mode. All configuration changes are done in Administrative mode, which is accessible under password control.
- Configuration is done from an open session.